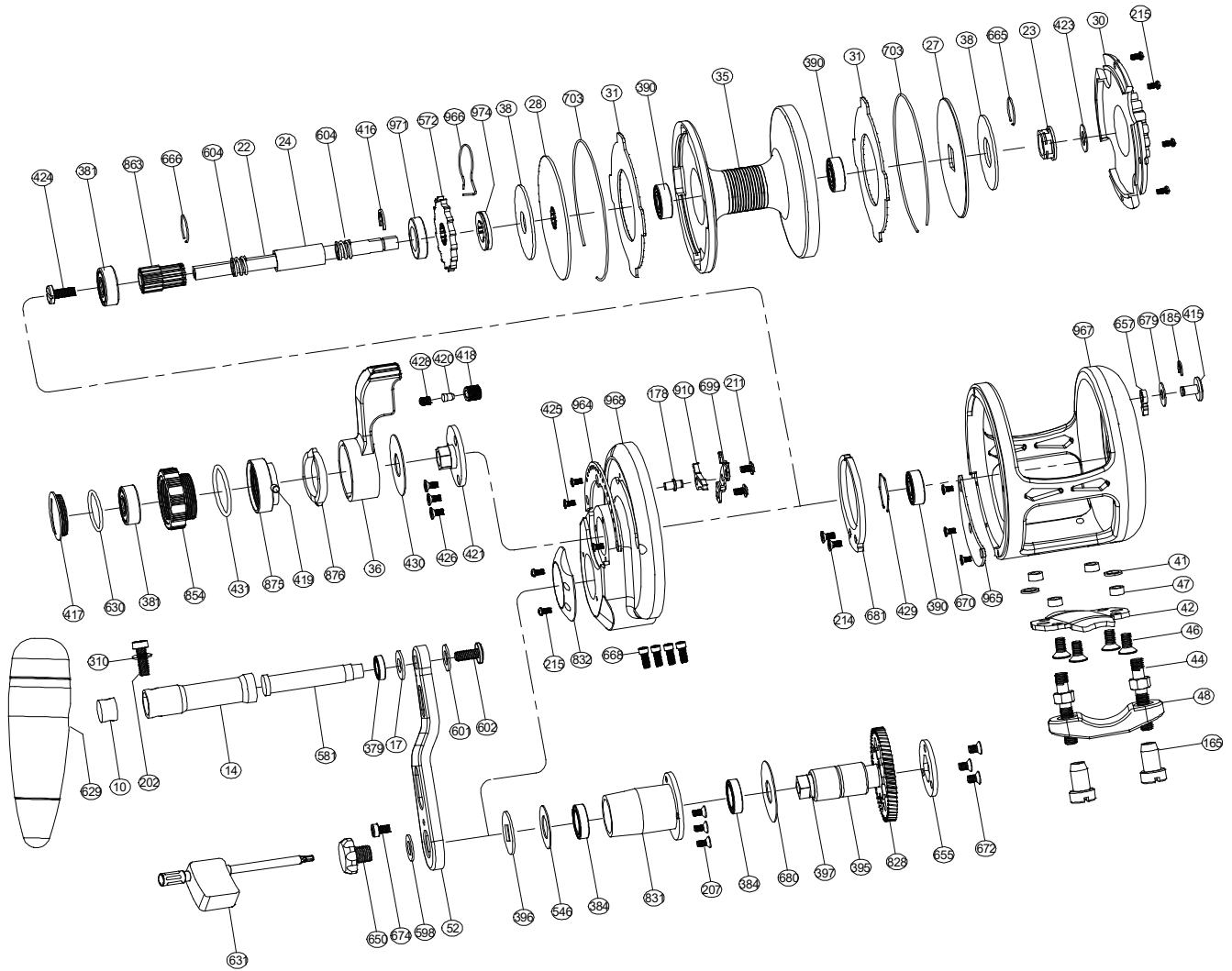


Sealion Series Lefty Dual Drag Jigging Reel

OSL11DL



No.	PARTS NAME	No.	PARTS NAME	No.	PARTS NAME
10	Handle shaft retainer	384	Ball bearing (S6700)	655	Fixed plate
14	Handle shaft coat	390	Ball bearing (S696)	657	Alarm sound gear
17	Washer	395	One-way bearing	665	Big ring
22	Spool shaft	396	Handle washer	666	Small ring
23	Drag plate undersleeve	397	Drive shaft	668	Side plate screws
24	Spool cannulation	415	Strike alert lever	670	Close cover screws
27	Rear drag plate	416	"E" washer	672	Fixed plate screws
28	Front drag plate	417	Drag knob cover	674	Anti-loose screw
30	Cover	418	Sound coat	679	Button washer
31	Drag plate	419	Pre-program key pin	680	Drive shaft coat washer
35	Spool	420	Sound nail	681	Alert ratchet
36	Drag control lever	421	Bearing cover	699	Set plate
38	Spool spring washer	423	Drag plate washer	703	Spool ring
41	Reel foot cannulation 1	424	Spool shaft screw	828	Drive gear-high speed
42	Reel foot	425	Screw embedded clip	831	Drive shaft coat
44	Fixed screws	426	Screw for bearing cover	832	Drive shield
46	Reel foot screws	428	Sound nail spring	854	Drag tension knob
47	Reel foot cannulation 2	429	Bearing ring	863	High speed pinion gear
48	Rod clamp	430	Drag control lever washer	875	Pre-program key
52	Handle arm	431	"O" ring	876	Pre-program plate
165	Fixed nuts	546	Drive shaft washer	910	Anti-reverse dog
178	Set plate nail	572	Anti-reverse ratchet	943	Handle knob screw -- left teeth
185	"E" washer	581	T handle nail	964	Embedded clip
202	Handle knob screw 1	598	Handle bolt washer	965	Close cover
207	Push slice screw	601	The small washer	966	Friction ring
211	Set plate screws	602	Handle knob screw	967	Frame
214	Alert ratchet screws	604	Spool shaft spring	968	Right plate
215	Cover screw	630	"O" ring	971	Pinion gear cover
310	Slingshot meson	629	Handle knob	974	Spring cover for silence
379	Ball bearing (S117)	631	Wrench		
381	Ball bearing (S606)	650	Handle bolt		