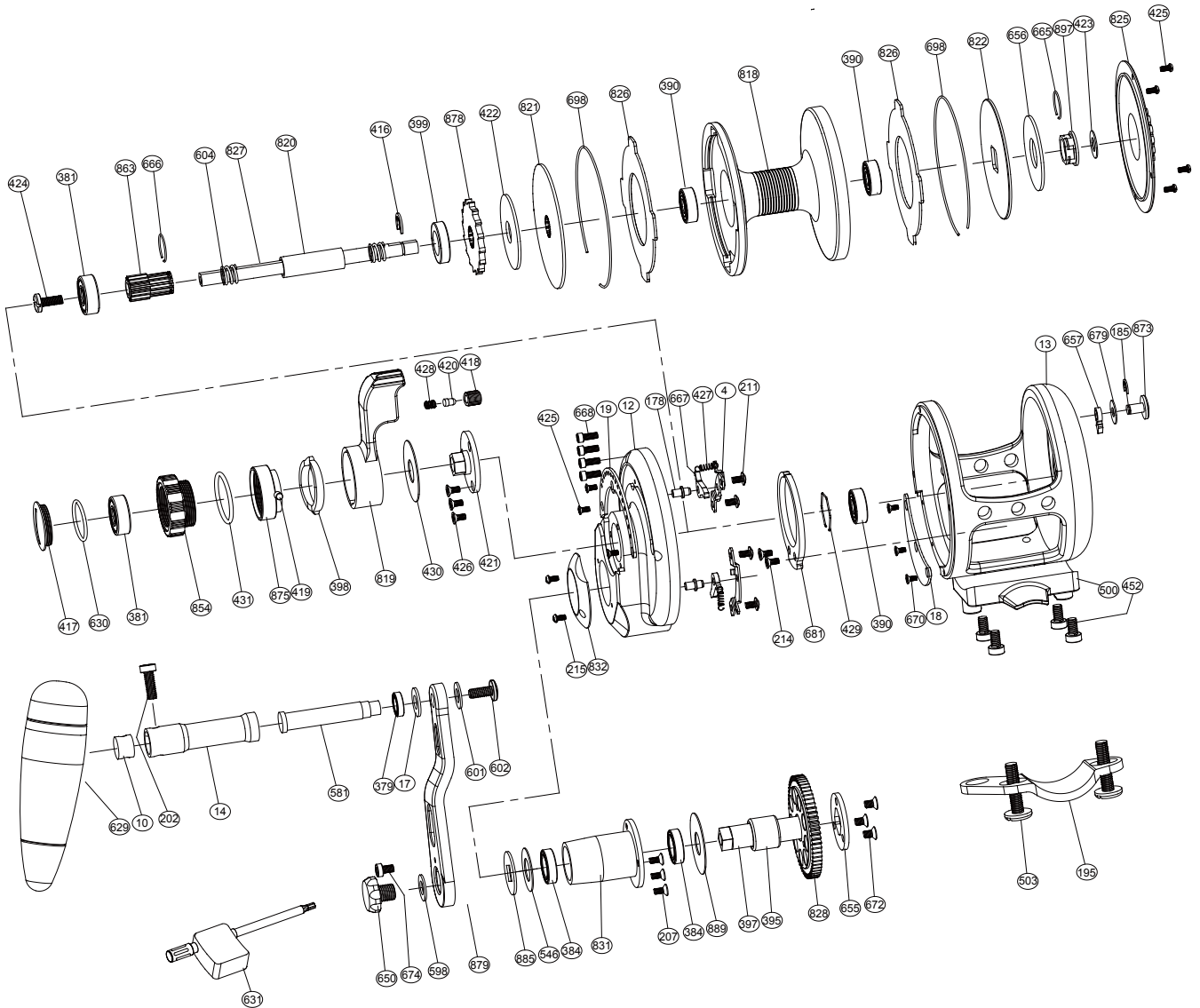


Sealion Series Lefty Dual Drag Jigging Reel

OSL08DL



No.	PARTS NAME	No.	PARTS NAME	No.	PARTS NAME
4	Set plate	421	Bearing cover	667	Anti-reverse dog
10	Handle shaft retainer	422	Spool spring washer	668	Side plate screws
12	Right plate	423	Drag plate washer	670	Close cover screws
13	Frame	424	Spool shaft screw	672	Fixed plate screws
14	Handle shaft coat	425	Screw embedded clip	674	Anti-loose screw
17	Washer 2	426	Screw for bearing cover	679	Washer 1
18	Close cover	427	Stopping slock spring	681	Alert ratchet
19	Embedded clip	428	Sound nail spring	698	Spool ring
178	Set plate nail	429	Bearing ring	818	Spool
185	"E" washer	430	Drag control lever washer	819	Drag control lever
195	Rod clamp	431	"O" ring	820	Spool cannulation
202	Handle knob screw 1	452	Reel foot screws	821	Front drag plate
207	Push slice screw	500	Reel foot	822	Rear drag plate
211	Set plate screws	503	Fixed screws	825	Cover
214	Alert ratchet screws	546	Drive shaft washer	826	Drag plate
215	Cover screw	581	T handle nail	827	Spool shaft
379	Ball bearing (S117)	598	Handle bolt washer	828	Drive gear-high speed
381	Ball bearing (S606)	601	Washer 3	831	Drive shaft coat
384	Ball bearing (S6700)	602	Handle knob screw 2	832	Drive shield
390	Ball bearing (S696)	604	Spool shaft spring	854	Drag tension knob
395	One-way bearing	629	Handle knob	863	High speed pinion gear
397	Drive shaft	630	"O" ring	873	Strike alert lever
398	Pre-program plate	631	Wrench	875	Pre-program key
399	Pinion gear cover	650	Handle bolt	878	Anti-reverse ratchet
416	"E" washer	655	Fixed plate	879	Handle arm
417	Drag knob cover	656	Spool spring washer	885	Handle washer
418	Sound coat	657	Alarm sound gear	889	Drive shaft coat washer
419	Pre-program key pin	665	Big ring	897	Drag plate undersleeve
420	Sound nail	666	Small ring		