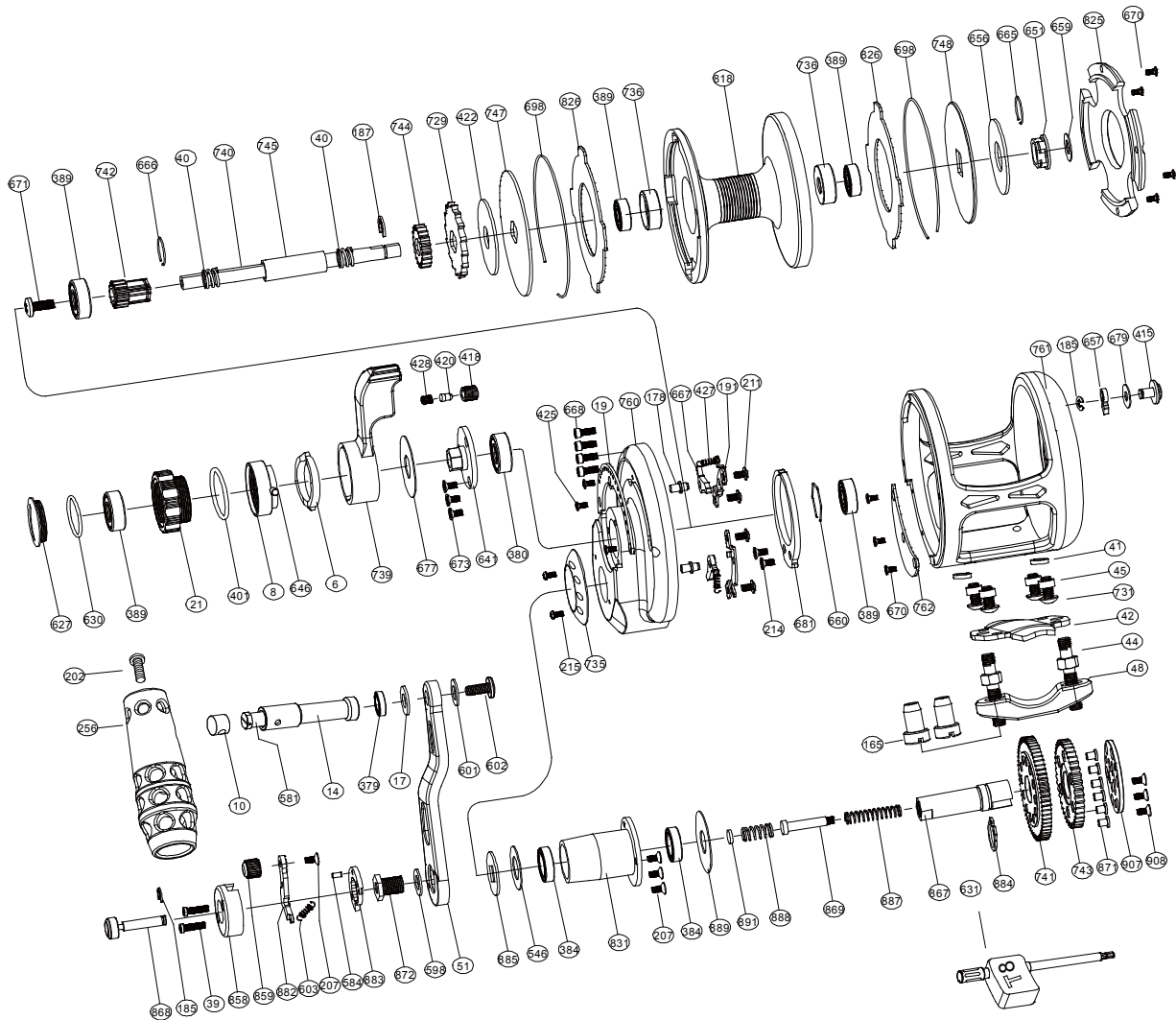


Sealion Series Lefty Dual Drag Jigging Reel

SL08DHL



No.	PARTS NAME	No.	PARTS NAME	No.	PARTS NAME
6	Pre-program plate	425	Screw embedded clip	739	Drag control lever
8	Pre-program key	427	Stopping stop spring	740	Spool shaft
10	Handle shaft retainer	428	Sound nail spring	741	Drive gear-high speed
14	Handle shaft coat	546	Drive shaft washer	742	High speed pinion gear
17	Washer 2	581	T handle nail	743	Drive gear-low speed
19	Embedded clip	584	Push nail	744	Low speed pinion gear
21	Drag tension knob	598	Handle bolt washer	745	Spool cannulation
39	Button screw	601	Washer 3	747	Front drag plate
40	Spool shaft spring	602	Handle knob screw 2	748	Rear drag plate
41	Reel foot cannulation 1	603	Push spring	760	Right plate
42	Reel foot	627	Drag knob cover	761	Frame
44	Fixed screws	630	"O" ring	762	Close cover
45	Reel foot cannulation 2	631	Wrench	818	Spool
48	Rod clamp	641	Bearing cover	882	Push slice
51	Handle arm	646	Pre-program key pin	883	Stopping slice
165	Fixed nuts	651	Drag plate undersleeve	825	Cover
178	Set plate nail	656	Spool spring washer	826	Drag plate
185	"E" washer	657	Alarm sound gear	831	Drive shaft coat
187	"E" washer	659	Drag plate washer	858	Button basement
191	Set plate	660	Bearing ring	859	Button lever knob
202	Handle knob screw 1	665	Big ring	867	Drive shaft
207	Push slice screw	666	Small ring	868	Push button shaft
211	Set plate screws	667	Anti-reverse dog	869	Slide pole
214	Alert ratchet screws	668	Sideplate screws	871	Variable-speed pin
215	Cover screw	670	Close cover screws	872	Handle bolt
256	Handle knob	671	Spool shaft screw	884	"C" washer
379	Ball bearing (S117)	673	Screw for bearing cover	885	Handle washer
380	Ball bearing (S605)	677	Drag control lever washer	887	Shaft insert spring
384	Ball bearing (S6700)	679	Washer 1	888	Drive shaft spring
389	Ball bearing (S695)	681	Alert ratchet	889	Drive shaft coat washer
401	"O" ring	698	Spool ring	891	Variable-speed washer
415	Strike alert lever	729	Anti-reverse ratchet	907	Variable-speed plate
418	Sound coat	731	Reel foot screws	908	Variable-speed screws
420	Sound nail	735	Drive shield		
422	Friction ring	736	Bearing bush		