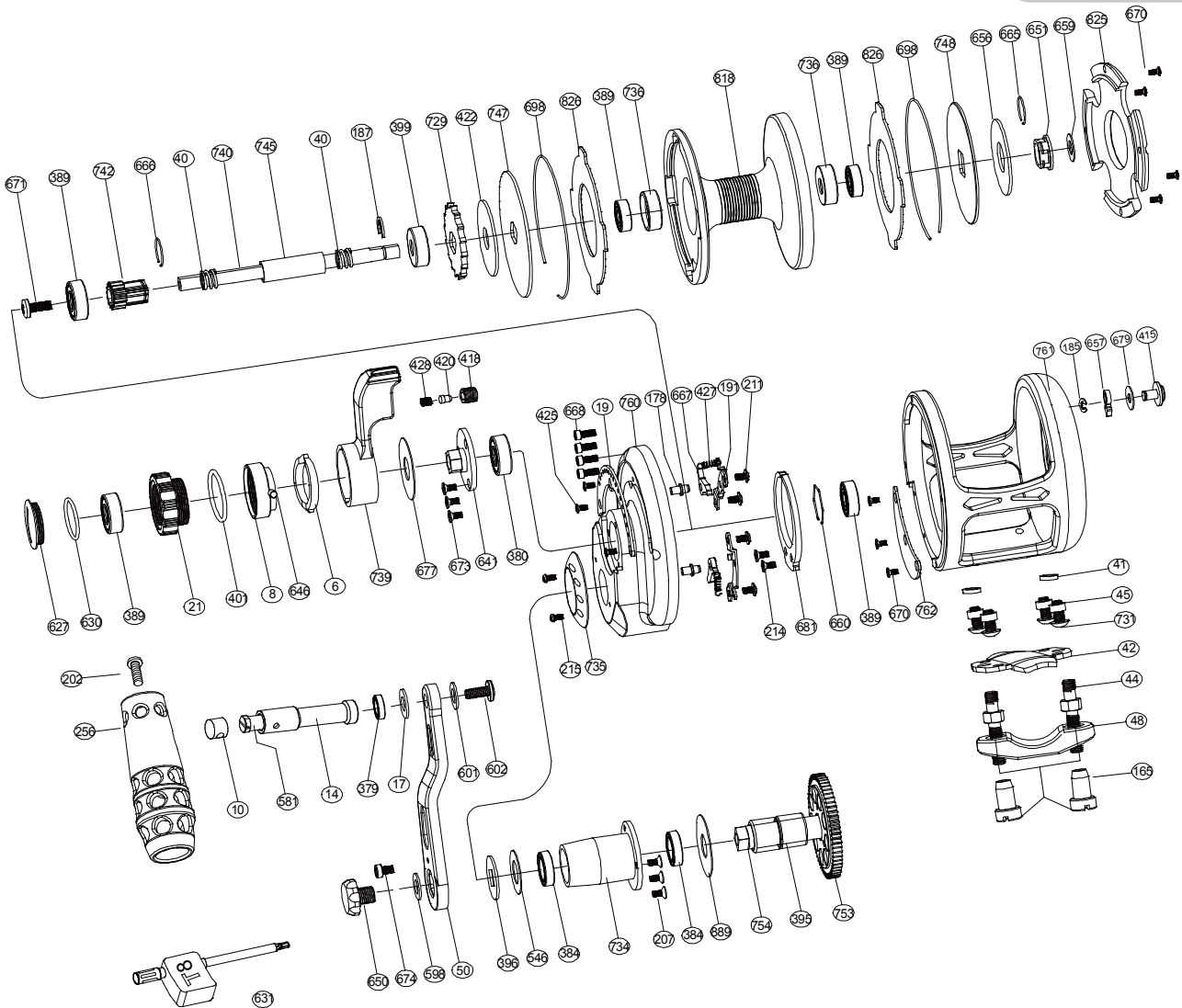


Sealion Series Lefty Dual Drag Jigging Reel

OSL08DHL



No.	PARTS NAME	No.	PARTS NAME	No.	PARTS NAME
6	Pre-program plate	415	Strike alert lever	679	Washer 1
8	Pre-program key	418	Sound coat	681	Alert ratchet
10	Handle shaft retainer	420	Sound nail	698	Spool ring
14	Handle shaft coat	422	Friction ring	729	Anti-reverse ratchet
17	Washer 2	425	Screw embedded clip	731	Reel foot screws
19	Embedded clip	427	Stopping stock spring	735	Drive shield
21	Drag tension knob	428	Sound nail spring	736	Bearing bush
40	Spool shaft spring	546	Drive shaft washer	739	Drag control lever
41	Reel foot cannulation 1	581	T handle nail	740	Spool shaft
42	Reel foot	598	Handle bolt washer	742	High speed pinion gear
44	Fixed screws	601	Washer 3	744	Low speed pinion gear
45	Reel foot cannulation 2	602	Handle knob screw 2	745	Spool cannulation
48	Rod clamp	627	Drag knob cover	747	Front drag plate
50	Handle arm	630	"O" ring	748	Rear drag plate
165	Fixed nuts	631	Wrench	760	Right plate
178	Set plate nail	641	Bearing cover	761	Frame
185	"E" washer	646	Pre-program key pin	762	Close cover
187	"E" washer	650	Handle bolt	818	Spool
191	Set plate	651	Drag plate undersleeve	825	Cover
202	Handle knob screw 1	656	Spool spring washer	826	Drag plate
207	Push slice screw	657	Alarm sound gear	734	Drive shaft coat
211	Set plate screws	659	Drag plate washer	753	Drive gear-high speed
214	Alert ratchet screws	660	Bearing ring	754	Drive shaft
215	Cover screw	665	Big ring	889	Drive shaft coat washer
256	Handle knob	666	Small ring		
379	Ball bearing (S117)	667	Anti-reverse dog		
380	Ball bearing (S605)	668	Side plate screws		
384	Ball bearing (S6700)	670	Close cover screws		
389	Ball bearing (S695)	671	Spool shaft screw		
395	One-way bearing	673	Screw for bearing cover		
396	Handle washer	674	Anti-loose screw		
401	"O" ring	677	Drag control lever washer		